

ULVERSTON PARISH CHURCH PROFILE

ST MARY WITH HOLY TRINITY
AND
ST JOHN'S OSMOTHERLEY



WELCOME TO UPC

We are a busy, thriving church, living our faith, growing our relationship with God and serving our community.

We are a diverse, multigenerational family loving and supporting each other through life's joys and challenges.

We are excited to share our faith with the people of Ulverston and the surrounding villages and to grow God's kingdom.



VISION

Know Christ

Grow in Christ

Share His love

PRIORITIES FOR 2022

Welcome children and young people into the church family

Combat the causes and effects of climate change

Reshape our buildings for mission

UPC has also adopted the Carlisle diocese "God For All" vision



Follow Daily **Care Deeply**
Speak Boldly **Tread Gently**

- Reaching out and helping people to encounter Jesus
- Encouraging people to **Follow Daily** through teaching and discipleship both communally and in small groups
- Helping our church family to **Speak Boldly** about our faith, **Care Deeply** for the people around us and **Tread Gently** in God's creation

WHO WE ARE

- Founded on a belief in the authority of scripture with a broadly charismatic evangelical approach to worship and links to the New Wine Network
- Welcoming and friendly church
- A parish that embraces both contemporary and traditional worship
- A Resourcing Church for Furness Mission Community, playing a major role in developing local ecumenical mission relationships.
- A Training Parish with a strong track record of sending workers into full time ministry and supporting curacies
- A member of Churches Together in Ulverston



WHAT WE OFFER

- A welcome into our church family where you will be supported in prayer and ministry
- A range of worship styles and approaches from traditional liturgy through more contemporary styles to informal Fresh Expressions such as Café Church
- A committed core staff of Youth Minister, Children and Families Minister, administrator and cleaner
- A strong team of lay ministers and readers
- A worship leader and team of musicians
- A parish on the edge of the Lake District National Park
- Life in the wonderful market town of Ulverston with its many festivals and celebrations
- A Rectory in keeping with the locality

WHERE WE ARE

Ulverston

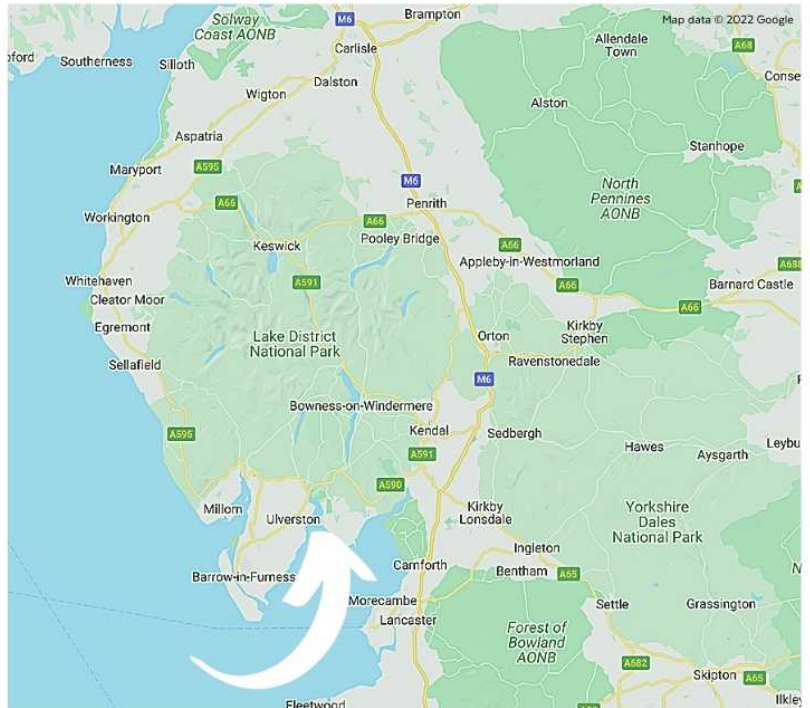
Ulverston sits just to the south of the Lake District National Park. It is a vibrant community famous for its many festivals, the most notable being the Lantern Festival and the Dickensian Festival. The town comes together and transforms for these events. Other festivals include Another Fine Fest (comedy), The International Music Festival and a food festival.

The town itself boasts many independent shops catering for most needs as well as branches of national retailers. Market Street is the cobbled main street with many smaller quirky streets leading off.

There are four primary schools of varying sizes including our Church of England primary school, Church Walk School which retained its Ofsted rating Good following its inspection in January 2022. There is one secondary school within the town which got a Good Ofsted rating in 2018. It has approximately 1400 students and a sixth form as part of the school.

Ulverston is a thriving town with a population that is beginning to get younger. There are plenty of activities to get stuck into for all ages. There are many activities on offer for children and teenagers including Scouts, Guides, Boys and Girls Brigade, Karate. Ulverston boasts a railway station which has regular services to Barrow in Furness then on up the Cumbrian Coast in one direction and Lancaster and Manchester Airport in the other.

Barrow in Furness which is approximately 10 miles away has a hospital with an A&E department. Big employers in the area include GSK, Siemens, Oxley's (all based in Ulverston), BAE and Furness General Hospital in Barrow and CGP based in Broughton in Furness to name just a few.



WHERE WE MEET

There has been a parish church in Ulverston since 1111AD. The mother church, St Mary with Holy Trinity is Grade II * listed with a Norman arch in the porch and dates primarily from the 19th Century, although the tower is 16th Century. St John's Osmotherley is our daughter church, together the churches are known as Ulverston Parish Church.

In addition to the two church buildings, we currently have a parish centre and church office. The rectory is a large Victorian house close to the church and Ford Park and the diocese also has a vicarage in the neighbouring village of Swarthmoor, which is home to our current curate, and a smaller property very close to the church. Discussions are at an early stage with the diocese regarding a rationalisation and updating of our properties.

St Mary's has a broadly evangelical ministry, however as the only Anglican church in the town it attracts people from various traditions and a broad spectrum of worship. We have 315 people on the electoral roll and our Sunday service attendance is currently around 100, although pre-Covid this was 200. Our 10.30 service is live streamed, so the reach is now greater and we are looking at ways of increasing our digital profile. St John's has a more traditional feel to its services.



St John's Osmotherley, designed by Austin and Paley, was built in 1874 as the daughter church to Ulverston Parish Church. Located just outside the village of Broughton Beck, St John's provides a much appreciated, more traditional service mainly from the Book of Common Prayer with organ and robed choir. These go alongside a Rogation service, Harvest Festival, Remembrance Sunday Act of Remembrance and Service of Nine Lessons and Carols, which attract a wider congregation and reaches out to the local farming community.

The thriving and committed congregation (averaging 25 at a regular service) share in home groups with the Parish Church. A number of St John's members form the core of the Open the Book team, taking assemblies into two local schools when Covid conditions permit. We have an active social media presence on Facebook.

St John's is acknowledged by many who come as a "thin place", conducive to prayer and contemplation, and we feel there is scope to develop this side of our ministry.

WHEN DO WE MEET

SERVICES

Ulverston Parish Church (UPC)

Sunday 8.30am

Quiet, reflective, traditional style of worship. It alternates between services of Holy Communion and Morning Prayer using the "Common Worship" order of service, with hymns.

Worshippers average between 20 - 30 in number each week.

Sunday 10.30am

A more contemporary service of Holy Communion, Morning Prayer or All Age Worship. Junior Church runs alongside Holy Communion and Morning Prayer. Refreshments after encourage relationship building and fellowship together.

Worshippers average between 90-110 in person with more joining the livestreamed service online each week.

Sunday 6.30pm

Cafe Church is a relaxed evening service encouraging discussion and participation. Currently suspended with plans to restart in Autumn 2022

Worshippers averaged 30/40 pre-covid each week.

Thursday 10.00am

Communion Coffee and Chat is a midweek communion service, generally attended by older members of the congregation, and is a short, traditional service.

Worshippers average between 20/30 in number each week.

St John's Osmotherley

Sunday 3.00pm

Second Sunday – Holy Communion

Fourth Sunday – Choral Evensong

The Book of Common Prayer is regularly used for both services.

Worshippers average between 20/30 in number each week.





HOW WE WORK

Children and Families Ministry

Baby and Toddler Group

This is a thriving group hosted every Wednesday morning, welcoming over 30 families each week. A committed team of church volunteers provide a fun and friendly atmosphere. We are exploring the idea of hosting a smaller group for those who prefer a quieter environment or a group for families of children with additional needs.

Families in Church

Junior Church groups for children and young people aged 4 to 14 run every Sunday except for the 2nd Sunday which is dedicated to all age worship.

Our desire is that children feel comfortable in church and enjoy worshipping in a way that is meaningful to them. The journey towards children taking active and meaningful roles in the services is ongoing. Our intention is to re-establish the 'Explore Together' format of all age worship so that more opportunities for them to lead and plan will be available.

We also offer occasional parenting courses and training events.



Youth

Ulverston Parish Church has a small but growing youth group. Working closely with Furness Network Youth Church (FNYC) and other Network Youth Churches we have a monthly rolling programme which gives a variety of activities and an opportunity for everyone to come to a church that suits them. With youth groups, a youth service, alongside Bitesize church, there is something for everyone aged 11-16 on a Sunday evening. We also encourage young people to join in our services and use their gifts and skills.

With FNYC we go on an annual weekend away and are working on a summer camp too. We have one off events through the year which recently has included building our very own crazy golf course!

We want to eat more, laugh more and grow together with God.

We'd love to grow our youth ministry team to be able to start a mid-week group as well as more one-off events through the year. We are also aiming to strengthen our links with the local secondary school once we have built up our team.



CONNECT GROUPS

- Connect and make friends
- Connect with the life of the church and the church community
- Connect to God; growing as followers of Jesus and helping others come to know Him for themselves

Our connect groups are where 'the rubber hits the road'! Spaces and places where we can be church in the week and in the world.

Homegroups

There are 12 groups which usually meet weekly in people's homes. We support each other, pray and study the Bible together and enjoy socialising too. Each homegroup has a slightly different demographic and character.

Our hope is that everyone would find a home that is right for them.

Eco Church Team

Our aim to improve our church's impact on God's creation is led by the Eco-church team who has been developing the biodiversity of the churchyard and looking at ways to reduce our carbon footprint.



Men's Ministry

Pint night and breakfasts provide a forum for informal fellowship, friendship and evangelism.

Bell Ringers

A small and dedicated group of bellringers from both inside and outside the church meet on Monday evenings for practice and ring for the Sunday service, special occasions and life events. The group has recently raised the funds and refurbished the bell frame and works.

Prayer Ministry

The prayer team, under our prayer coordinator, provides prayer ministry at the 10.30 service and operates our prayer net for both urgent and regular prayer requests.

Music Group

Our talented group of musicians meet weekly for practice and provide an eclectic mix of contemporary and traditional worship.

Communion Coffee and Chat

Midweek communion service is followed by time of fellowship and has a small but loyal congregation.

Gardening Team

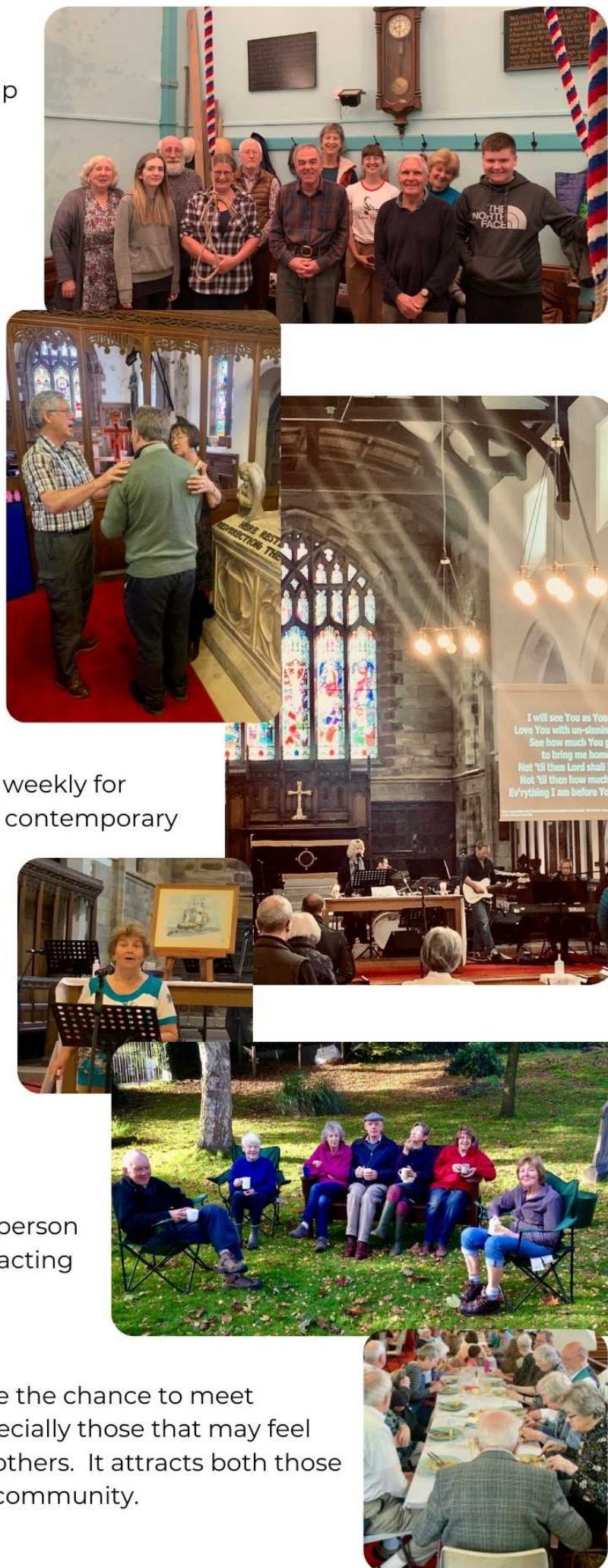
The formal gardening group meet regularly during the week.

Alpha

We run regular Alpha Courses both in person and online, our most recent group attracting guests from our toddler parents.

The Lunch Bunch

Takes place periodically offering people the chance to meet together over lunch for fellowship, especially those that may feel lonely and benefit from meeting with others. It attracts both those from the church family and the wider community.



Parish fellowship

This group meets once a month. They share a short act of worship before enjoying a talk given by both ecumenical and secular speakers. At various times through the year they join with other similar groups from Ulverston's churches



THE CHURCH IN THE COMMUNITY

As the town parish church, we are in demand for weddings and funerals and see these as an opportunity to offer love and support to families during significant life events.

Many families come forward to have their children baptised at UPC, most of whom don't attend on a Sunday morning but may be involved in the Toddler group, attend family events in the church or have a family connection. The process of preparing, getting to know and following up with each family is a work in progress. Families have a choice between a Baptism or Thanksgiving service, both offered either as a private service or within a normal Sunday service. Whichever is most appropriate, each is made to feel as welcoming and special as possible.

A Baptism or Thanksgiving bag is given to each child containing an age-appropriate Bible, certificates, candle, prayer box and a bear with an invitation to the annual Teddy Bear's Picnic for the families.



HOME COMMUNIONS

A small team of lay ministers and clergy offer regular communion to our family members who are unable to attend church.

CHURCH WALK C of E PRIMARY SCHOOL

In sight of the church building is Church Walk school, a Voluntary Aided Church of England Primary School. As a small school, currently 100 children on roll, everyone feels part of the school family which ensures everyone cares for each other.

Whole school collective worship takes place in church every half term and clergy/children's minister assemblies take place every fortnight in school, these were recorded assemblies during the pandemic. Nativity plays and other celebrations also take place in church.

The school is a Gold Rights respecting school and is part of a Global learning initiative linked with local schools and schools in Ethiopia.

LOCAL SCHOOLS

We have links with other local schools who both use the church building for tours and visits as part of their RE curriculum and invite staff to lead collective worship in the school every month.

CHAPLAINCY AT ST MARY'S HOSPICE

The church has close links with the local hospice in Ulverston, we have a lay minister who provides chaplaincy support to families and patients.

ONE OFF EVENTS

Throughout the year, themed events/parties are held in the church building bringing the church, school and local communities together. Examples include the Pancake Party, Pumpkin Party, Christingle Services, Teddy Bears Picnic, Movie Nights and Quiz & Craft afternoons.

The church is also used for secular music events such as the Ulverston International Music Festival.



CHURCHES TOGETHER IN ULVERSTON

UPC is one of a number of churches in Ulverston who together form one church, regardless of the individual church name or denomination. We are a united group of people who all believe in Jesus and his claim to be "The Way, The Truth and The Life". We seek to follow Jesus and to reflect his life-changing message and values into our immediate communities.



Each individual church has its own distinct flavour and is made up of different age-groups, giftings, vision and style.

The diversity within the churches brings a richness to our town as we seek to be channels of blessing within our communities, through our individual and corporate expression of The Church in Ulverston.

FURNESS MISSION COMMUNITY

Is an ecumenical initiative between the Anglican, Methodist and Salvation Army Churches which aims to work together for the common good without jealousy and with gladness so that people of all ages may come to know Jesus and follow Him.



We are a resourcing church for the Mission Community and Deanery through the shared ministry of Children and Families Minister and Furness Network Youth Church Leader.

UPC MISSION PARTNERS

UPC has a very clear vision that we should financially support others in their ministries. We have a variety of mission partners.



We also support some individuals sent from this church to various training and mission roles both at home and overseas.

FINANCES

Church Income and Expenditure

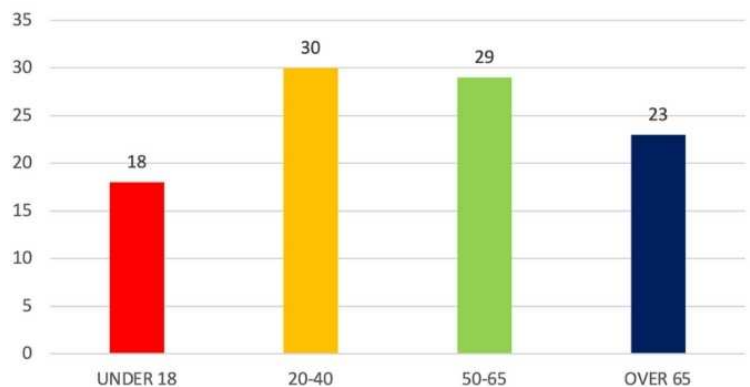
- In 2021 total income was £203,000, and expenditure £205,000 - the church broke even on an ongoing basis, but income and expenditure were ~20% below budget, primarily due to COVID.
- Of total income £165k was planned giving, including Gift Aid recovered.
- Our Parish Share is £96,000, approximately 1/3 of the Deanery Offer. Total staff costs are £107,000.
- In 2022, despite our stewardship campaign in the autumn, the budget set is for a £27,000 deficit on the year, without any Restoration Mission spending.
- We have a demographic issue across the life of the church, which affects not just prospective future funding, but our ability to attract new younger followers of Jesus.

CHALLENGES

Our priorities for the church are informed by a threefold challenge, not unique to UPC...

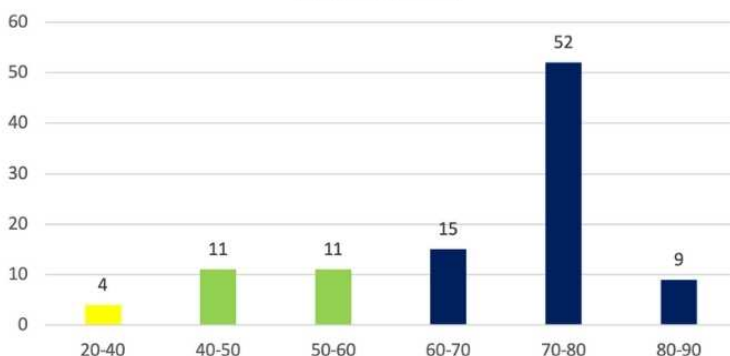
The age demographic of the church doesn't reflect the population of Ulverston, so we need to find ways to bring more young families and children into fellowship.

ULVERSTON POPULATION



Parish population (2021 census)	11,873
Parish number of occupied households	5,437
Area (square miles)	8.5
Population density (people per square mile)	1,388
% White ethnicity	98.5
% Christian	67.3

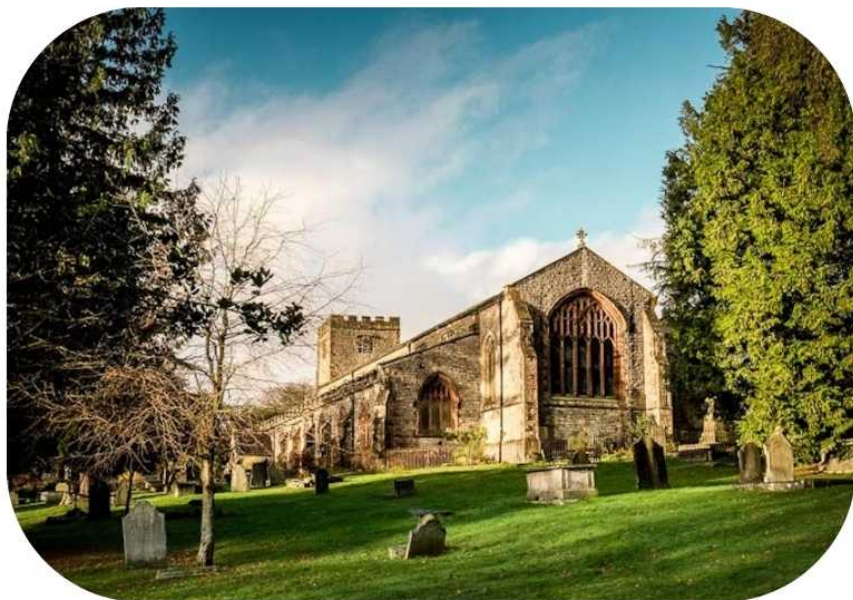
UPC POPULATION
(By giving profile)



Our buildings need work to make them suitable for the changing needs of the church and community. The estimated cost of our Restoration Mission exceeds the funds we have available.

Parish Church

This is a grade II* listed building which has significant issues which need to be addressed. However, the challenge is being met through our plans to refurbish the building and make our buildings fit for purpose.



Parish Office

The administration of the church is delivered from our separate office close to the church and car park. We are examining how we can use the space more creatively and flexibly as part of the aim of making our buildings fit for mission.



Parish Centre

The church currently owns a building which provides space and facilities for both church and community use. The building was last refurbished in 1985 and needs significant investment; consequently, we have recently decided to sell it.

We have an aspiration to be carbon neutral by 2030. So we are looking at ways we can reduce our impact on the planet by conserving energy, reducing waste and increasing our biodiversity.



WHAT WE ARE SEEKING

A strategic leader who is rooted in God's word and receptive to the work of the Holy Spirit, in their own life and that of the church. A wholehearted disciple of Christ, able to draw others into deep relationship with God and engage effectively with our surrounding communities. A person who has a heart for God's people, God's Mission to Ulverston and who can guide the church into the next part of God's plan for our fellowship and community.

We need a person of prayer, a delegator, an encourager, someone who values and encourages the gifts and ministries of the church family. Our list of desirable qualities looks something like this...

God's **calling** to reach the people of Ulverston with the Gospel

Passion for mission both at home and overseas

Vision to lead the church to growth, both spiritually and numerically

Openness to new technologies to connect digitally with our church family and the wider community

Ability to facilitate and encourage people of all ages to use their gifts

Aspiration to see children and young people come to Jesus and be a vibrant part of church life

A deep relationship of **prayer** who can lead by example

Skills to lead and enable all members of the church family to play a full part in the life of the church

Heart for worship which encourages different expressions and styles of worship

Enthusiasm to repurpose our buildings to be fit for mission

ENTHUSIASM

SKILLS

ABILITY

VISION

PASSION

HEART

ASPIRATION

CALLING

PRAYER

OPENNESS





CONTACT INFORMATION

Ulverston Parish Church
St John's Osmotherley

CPAS (UPC patrons)

Sovereign Court One (Unit 3)
Sir William Lyons Road
University of Warwick Science Park
Coventry
CV4 7EZ

Tel: 0300 123 0780
Email: info@cpas.org.uk.

For informal discussion and further information:

Ulverston Parish Church
20 Church Walk
Ulverston, Cumbria
LA12 7EN

Tel. 01229 588081
Email: office@ulverstonparishchurch.org
Web: www.ulverstonparishchurch.org

UPC Churchwardens:
John McKenzie churchwarden1@ulverstonparishchurch.org
Jill Shephard churchwarden2@ulverstonparishchurch.org